

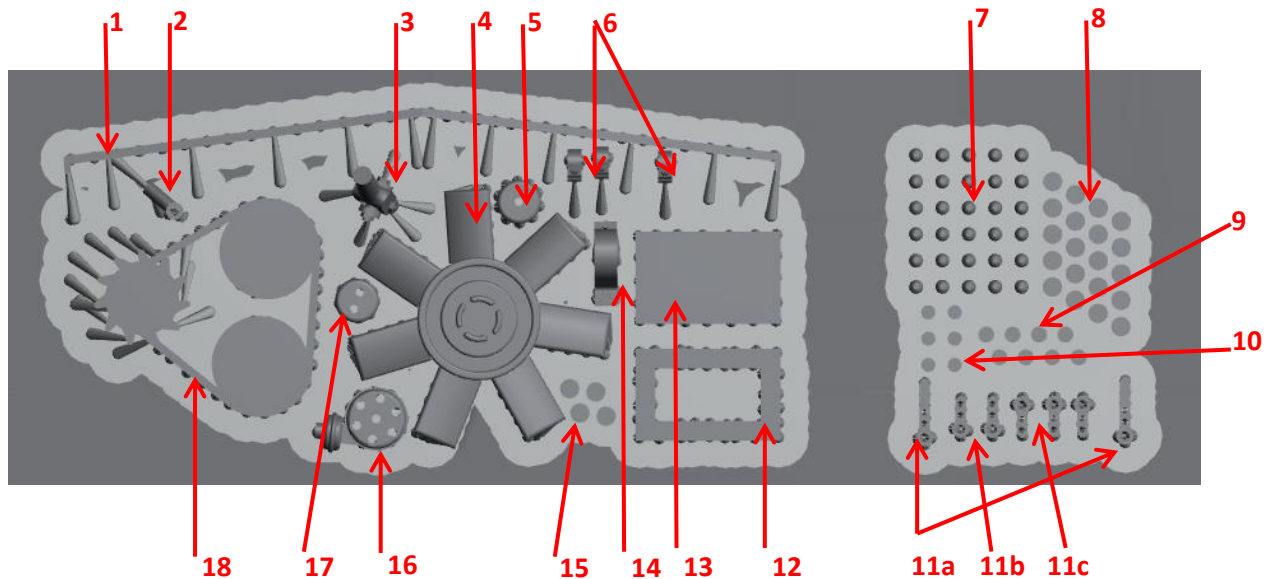
Falcon

Scale Models



Nissan Fairlady 240Z Street-Custom (Tamiya 24367) upgrade kit

Catalog no.: FSM C 15



Parts list:

Part no.	Part name	Part no.	Part name
1	Front grill mesh x 1	10	Rim air valve x6
2	Steering column bottom part x1	11	Throttle connector (long x2, short x5)
3	Steering column top part x1	12	Battery bottom part x1
4	Fan x1	13	Battery top part x1
5	Ignition coil bottom part x1	14	Ignition coil holder x1
6	Battery wire connector x3	15	Front shock absorber central screw x4
7	Front/rear fenders screw x30	16	Ignition distributor x1
8	Rim screw x20	17	Ignition coil top part x1
9	Front shock absorber screw x8	18	Timing belt with wheels x1

other parts: black wire x1, metal rod x2

Installation guide

Cut all parts with sharp cutters like Tamiya 74123. Do not break off parts.

Use CA glue to join resin parts together as well as to join resin parts with the ones from the base kit.

Front grill mesh

Part (1) replaces R16 part from the base kit. Part (1) on the back side has small cuts which can be used for positioning during installation. Use CA glue or Micro Kristal Clear to glue part (1) to the car body.

Steering column

Inspect installation holes in parts (2) and (3). If needed correct them using 0.4mm drill. Hole depth of 2mm in part (3) is enough. Smooth both ends of the metal rod and glue it with part (3). On the other end of the rod insert part (2). Use part P10/C14 from the base kit as well as make a test fit to specify the total length of the metal rod.

Rim air valve

Air valve installation hole diameter – 0.4mm.

Rim screws

Smooth down the molded pins and drill 0.6mm installation holes for rim screws.

Front/rear fenders screws

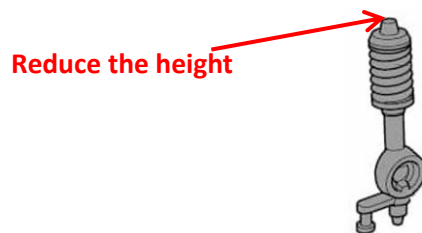
Smooth down the molded pins and drill 0.5mm installation holes for front/rear fenders screws.

Front shock absorber screws

Smooth down the molded pins and drill 0.4mm installation holes for front shock absorber screws.

Front shock absorber screws

Smooth down by half installation pin and drill 0.5mm installation hole for front shock absorber central screw. Make a test fit to check if the screw is not too high in relation to the body panels. If so gently reduce the height of the installation pin.



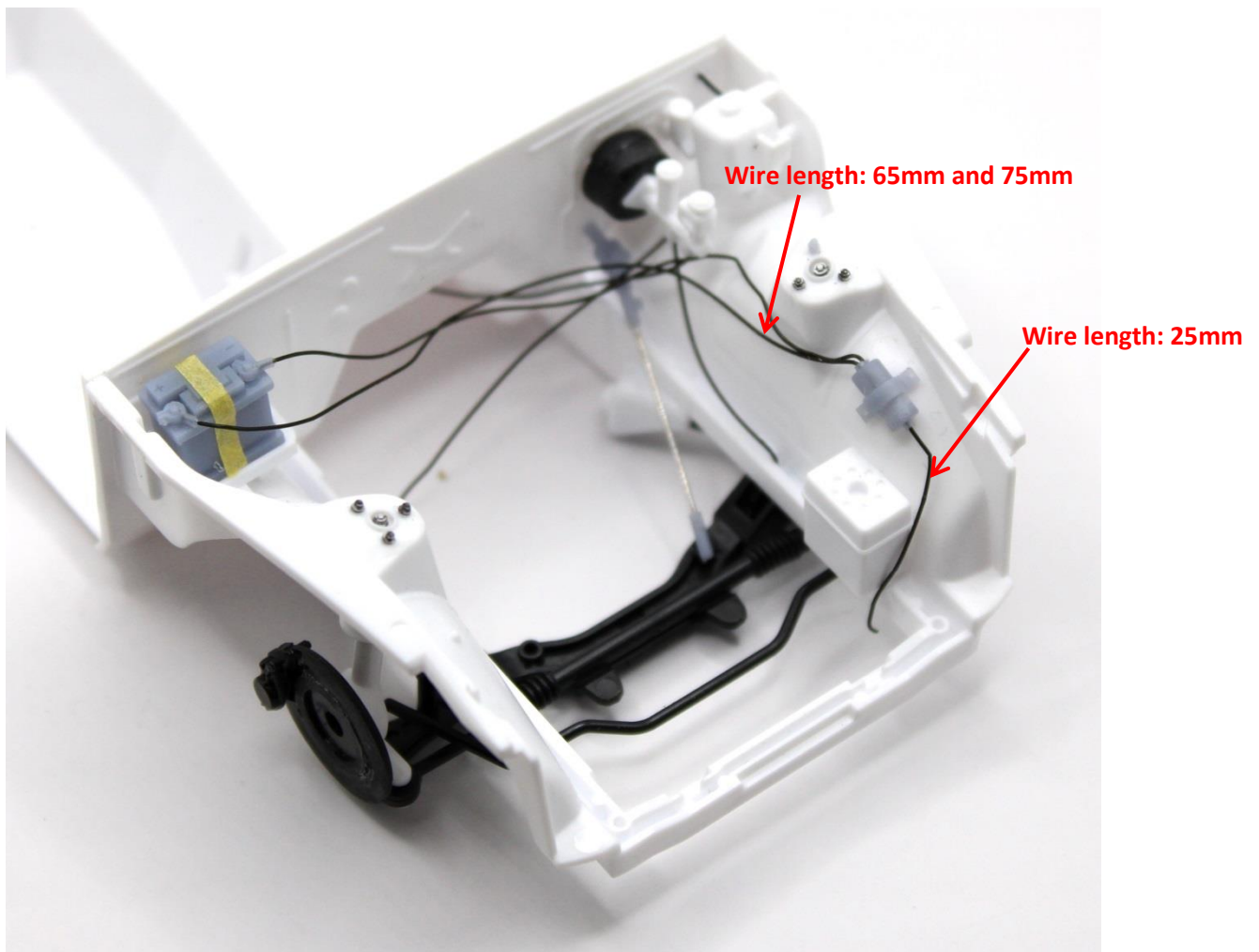
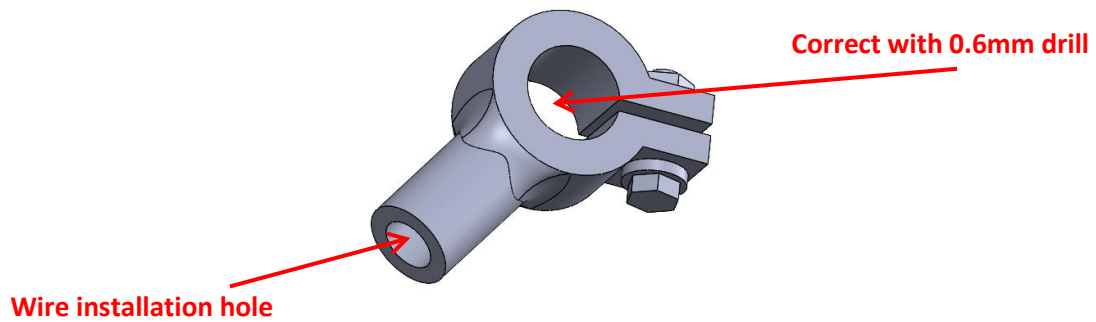
Fan and timing belt

Fan (4) replaces part E10 while timing belt (18) goes for E11 from the base kit. Fan (4) has a hole under the blades. Use it if you wish to add extra wiring to this element.

Ignition coil, battery and ignition distributor

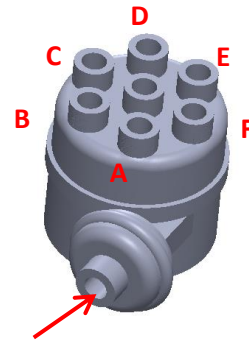
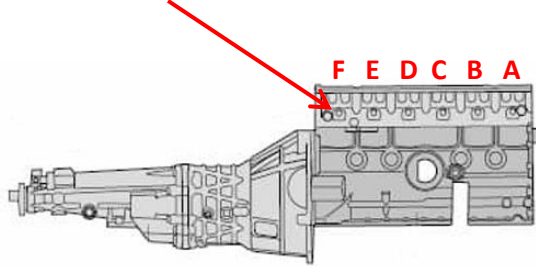
If needed correct holes in parts (5) and (17) then join parts together and add the holder (14). Place created part as shown below.

Glue bottom (12) and top (13) parts of the battery and using masking tape (not included) to create a thin strip which will simulate the leather strap which holds the battery. Use battery wire connectors (6) to add wiring.



Connect the single wire from the ignition coil to the central hole in the ignition distributor (16) which replaces part E3 from the base kit.

Drill 0.4mm holes x6



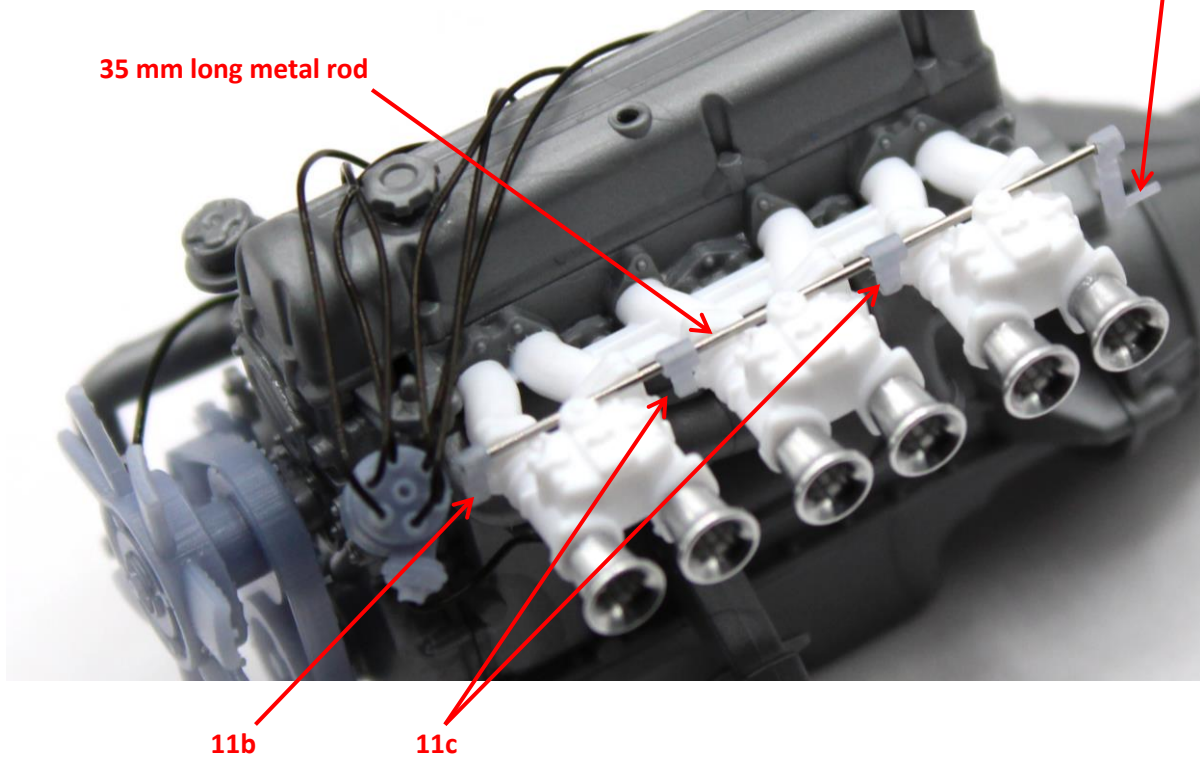
Correct hole with 0.4mm drill. Cut 15mm long wire and connect it to the bottom of the first throttle section (drill small hole at the bottom to hide other end of the wire).

Wire lengths are as follows: A 30mm, B 35mm, C 40mm, D 40mm, E 45mm F 45mm

Throttle connector

Part 11a - adjust length to make it touch the car body

35 mm long metal rod



Installation suggestion:

Make a test if all 11a, b, c parts move freely on the metal rod. If not smooth the metal ends of the metal rod.

Glue 11b on one end first. Then insert 2 x 11c – do not glue them. Glue 11b to the throttle body (metal rod can be placed on the throttles). In the next step, glue 11c to the throttles. In the last step insert 11a and position it in such a way that small pin touches the body.